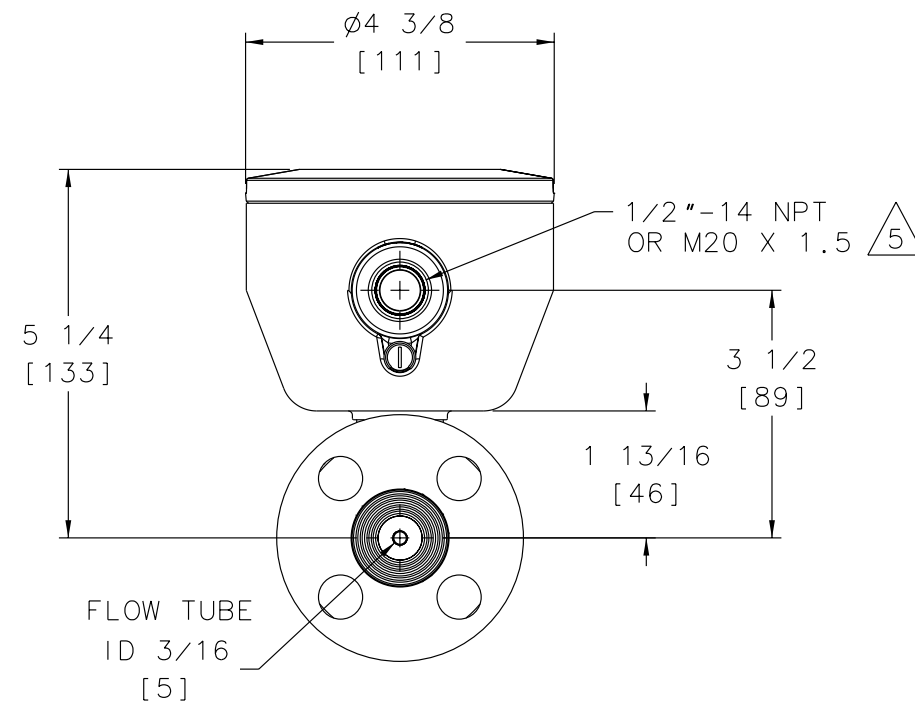
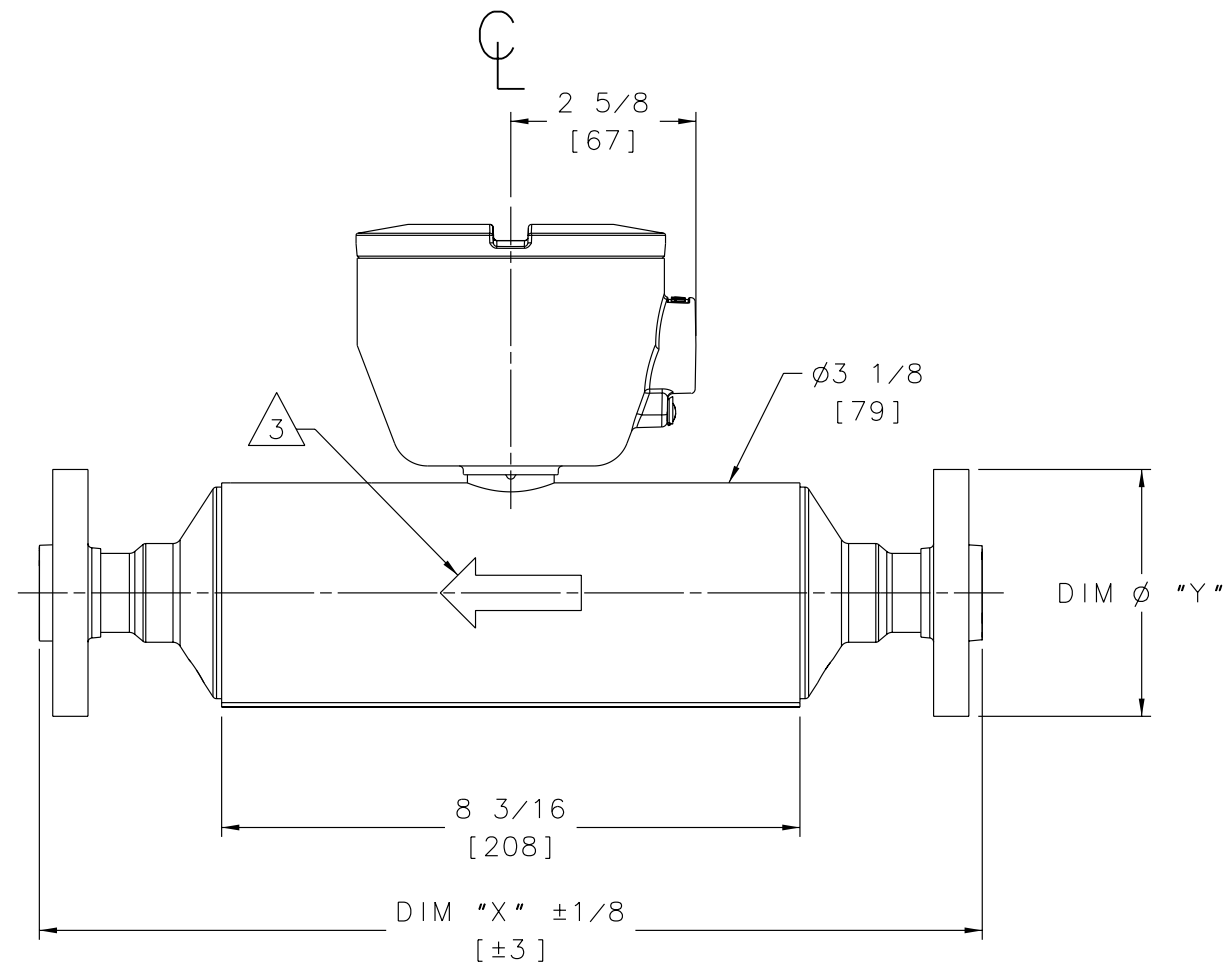


GENERAL NOTES (UNLESS OTHERWISE SPECIFIED)

- 1 ASME/ANSI B16.5 FLANGE: CLASS 150, 300 OR 600.  
FLANGE CONSTRUCTED FROM TWO MATERIALS:  
-F316/316L STAINLESS STEEL AND TITANIUM GRADE 5 (6AL-4V).  
-ONLY TITANIUM GRADE 5 IS IN CONTACT WITH PROCESS FLOW.  
-USE PROPERTIES OF F316 FOR MECHANICAL PROPERTIES.
- 2. MATERIALS OF SENSOR CONSTRUCTION:  
WETTED MATERIALS: TITANIUM  
SENSOR CASE MATERIAL: STAINLESS STEEL 304L  
WIRING JUNCTION BOX: STAINLESS STEEL CF-3M
- 3 THE ARROW INDICATES NORMAL FLOW DIRECTION.  
THE SENSOR CAN BE INSTALLED IN NORMAL (FORWARD) FLOW,  
REVERSE FLOW, OR BI-DIRECTIONAL FLOW DIRECTION.  
DESIRED FLOW DIRECTION SHOULD BE SET IN TRANSMITTER CONFIGURATION.
- 4. DIMENSIONS ARE IN INCHES [MM]. METRIC UNITS ARE FOR  
REFERENCE. DO NOT CONVERT.
- 5 HOUSING ALLOWS FOR 360° ROTATION FOR ORIENTATION OF  
WIRING ENTRANCE.

1	PROCESS CONNECTION	DIM "X"	DIM "Y"	SENSOR WEIGHT	SHIPPING WEIGHT
	ANSI 150# 1/2"	13 5/16 [338]	3 1/2 [89]	18 LBS [8 kg]	23 LBS [10 kg]
	ANSI 300# 1/2"	13 13/16 [351]	3 3/4 [95]	19 LBS [9 kg]	24 LBS [11 kg]
	ANSI 600# 1/2"	13 15/16 [354]	3 3/4 [95]	19 LBS [9 kg]	24 LBS [11 kg]



		MICRO MOTION, INC. BOULDER, COLORADO	
		DIM DWG, T025 ANSI COREPRCSR	
THIRD ANGLE PROJECTION	NAME	DATE	SIZE
DRAWN	LLR	6/25/01	DWG. NO.
CHKD.	JLA	2/14/02	D
APVD.	JLA	2/14/02	EP-4000668
COPYRIGHT 2003 MICRO MOTION, INC. ALL RIGHTS RESERVED		SCALE 3:4	DO NOT SCALE DRAWING SHEET 1 OF 1

8

7

6

5

4

3

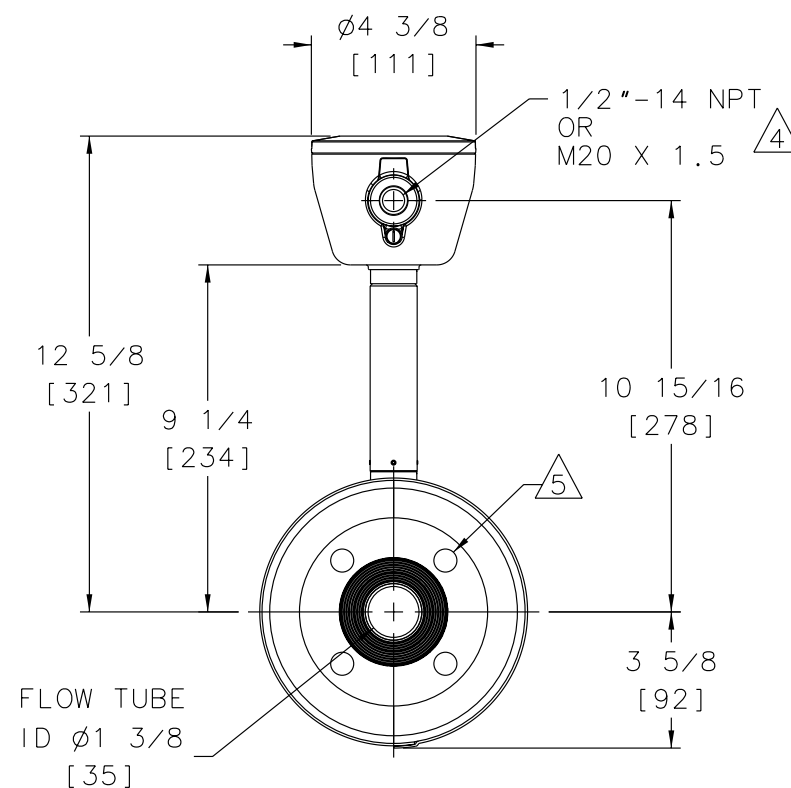
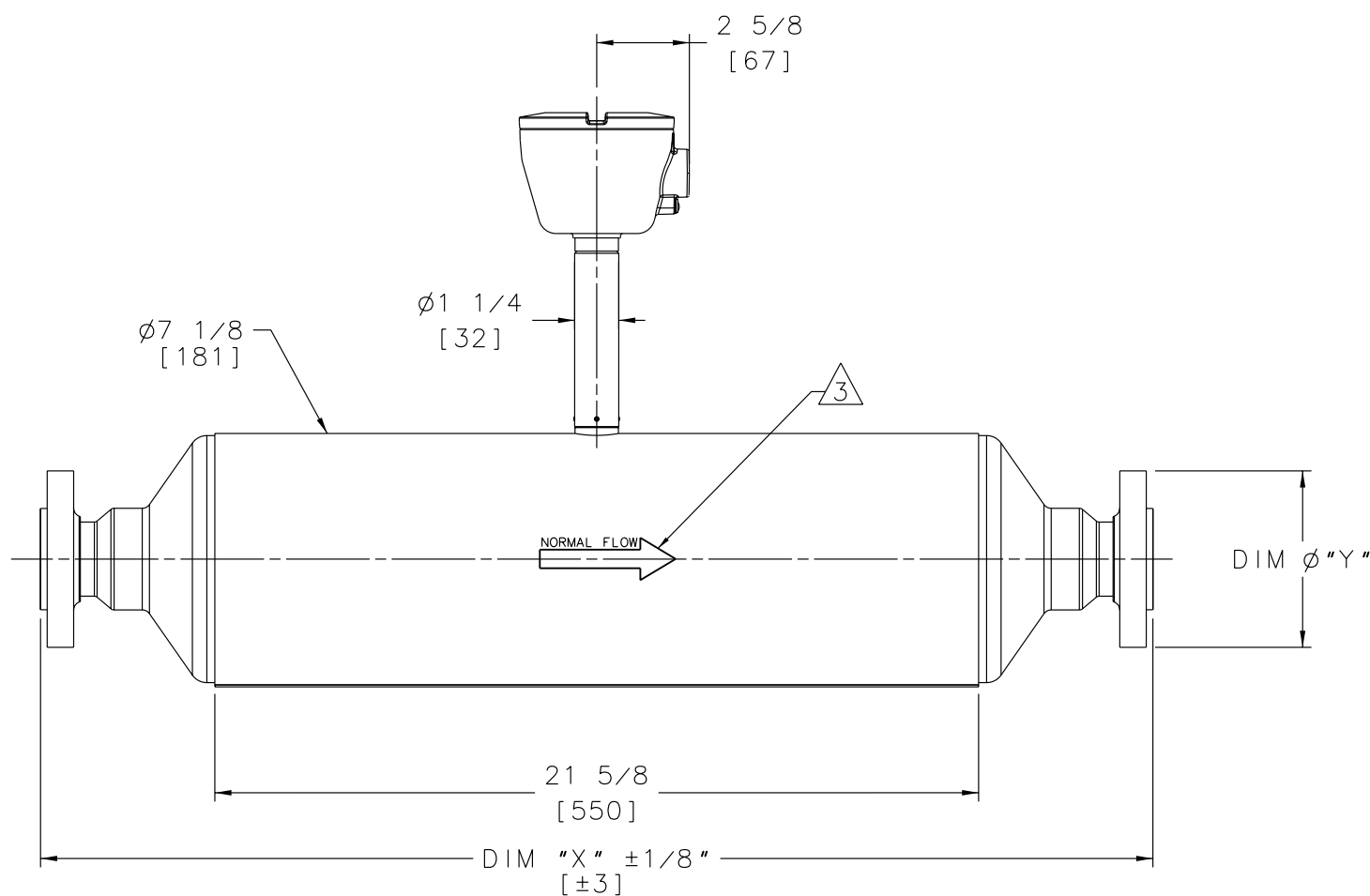
2

1

GENERAL NOTES (UNLESS OTHERWISE SPECIFIED)

- 1. ASME/ANSI B16.5 FLANGE: CLASS 150, 300 OR 600.  
FLANGE CONSTRUCTED FROM TWO MATERIALS:
  - F316/316L STAINLESS STEEL AND TITANIUM GRADE 5 (6AL-4V).
  - ONLY TITANIUM GRADE 5 IS IN CONTACT WITH PROCESS FLOW.
  - USE PROPERTIES OF F316 FOR MECHANICAL PROPERTIES.
- 2. MATERIAL OF SENSOR CONSTRUCTION:  
WETTED MATERIALS: TITANIUM  
SENSOR CASE MATERIAL: STAINLESS STEEL 304L/CF3  
WIRING JUNCTION BOX: ALUMINUM PAINTED
- 3. THE ARROW ON THE SENSOR HOUSING INDICATES NORMAL FLOW DIRECTION.  
THE SENSOR CAN BE INSTALLED IN NORMAL (FORWARD) FLOW,  
REVERSE FLOW OR BI-DIRECTIONAL FLOW DIRECTION.  
DESIRED FLOW DIRECTION SHOULD BE SET IN TRANSMITTER CONFIGURATION.
- 4. HOUSING ALLOWS FOR 360° ROTATION FOR ORIENTATION OF WIRING ENTRANCE.
- 5. DIMENSIONS ARE IN INCHES. METRIC UNITS ARE FOR REFERENCE; DO NOT CONVERT.
- 6. THIS FLANGE SIZE HAS 8 BOLT HOLES,  
NOT 4 AS SHOWN.

PROCESS CONNECTION	DIM "X"	DIM $\phi$ "Y"	SENSOR WEIGHT	SHIPPING WEIGHT
ANSI 150# 1 1/2"	31 7/16 [799]	$\phi$ 5 [127]	138 LBS [63 kg]	153 LBS [70 kg]
ANSI 300# 1 1/2"	32 1/16 [815]	$\phi$ 6 1/8 [155]	140 LBS [64 kg]	154 LBS [70 kg]
ANSI 600# 1 1/2"	32 5/16 [821]	$\phi$ 6 1/8 [155]	145 LBS [66 kg]	159 LBS [73 kg]
6 ANSI 150# 2"	31 11/16 [805]	$\phi$ 6 [152]	143 LBS [65 kg]	157 LBS [72 kg]
6 ANSI 300# 2"	32 5/16 [820]	$\phi$ 6 1/2 [165]	147 LBS [67 kg]	161 LBS [73 kg]
6 ANSI 600# 2"	32 9/16 [827]	$\phi$ 6 1/2 [165]	149 LBS [68 kg]	163 LBS [74 kg]



		MICRO MOTION, INC. BOULDER, COLORADO			
		DIM DWG, T150 ANSI EXT CORE AL			
THIRD ANGLE PROJECTION	NAME	DATE	SIZE	DWG. NO.	REV.
DRAWN	LLR	12/26/02	D	EP-20000650	A
CHKD.	JLA	01/02/03	SCALE 2:5	DO NOT SCALE DRAWING	SHEET 1 OF 1
APVD.	JLA	01/02/03			

COPYRIGHT 2003 MICRO MOTION, INC. ALL RIGHTS RESERVED

8

7

6

5

4

3

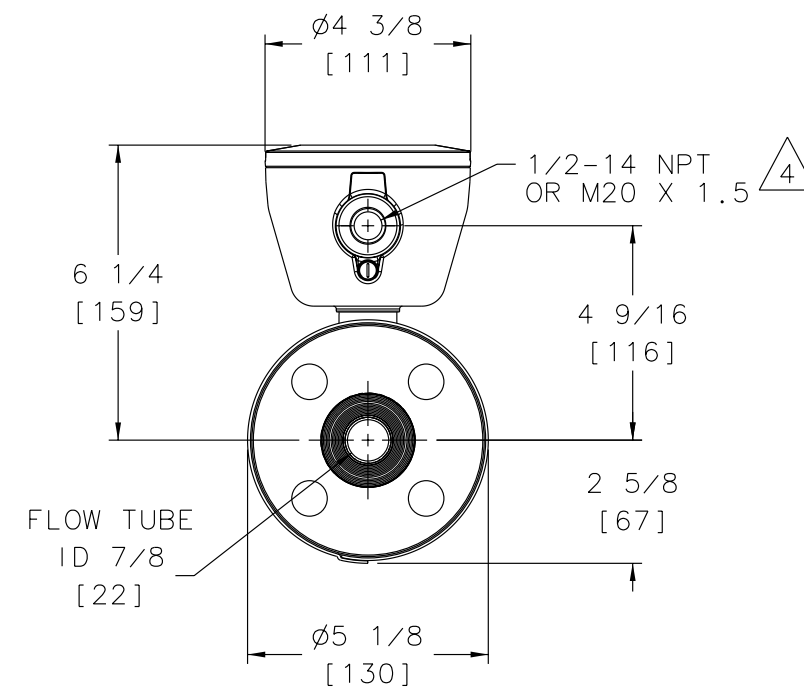
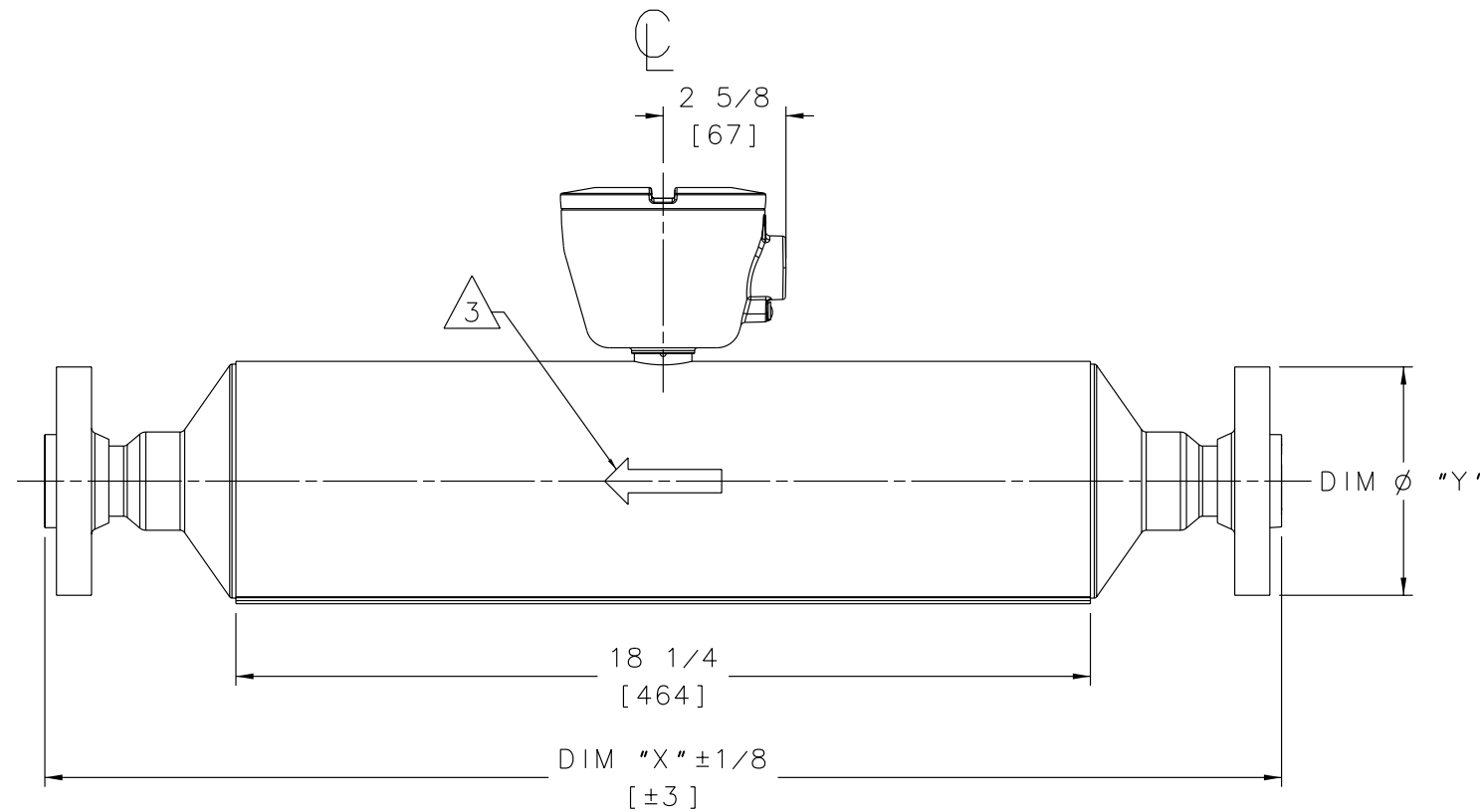
2

1

GENERAL NOTES (UNLESS OTHERWISE SPECIFIED)

- 1. ASME/ANSI B16.5 FLANGE: CLASS 150, 300 OR 600.  
FLANGE CONSTRUCTED FROM TWO MATERIALS:
  - F316/316L STAINLESS STEEL AND TITANIUM GRADE 5 (6AL-4V).
  - ONLY TITANIUM GRADE 5 IS IN CONTACT WITH PROCESS FLOW.
  - USE PROPERTIES OF F316 FOR MECHANICAL PROPERTIES.
- 2. MATERIAL OF SENSOR CONSTRUCTION:  
WETTED MATERIALS: TITANIUM  
SENSOR CASE MATERIAL: STAINLESS STEEL 304L/CF3  
WIRING JUNCTION BOX: ALUMINUM PAINTED
- 3. THE ARROW ON THE SENSOR HOUSING INDICATES NORMAL FLOW DIRECTION.  
THE SENSOR CAN BE INSTALLED IN NORMAL (FORWARD) FLOW,  
REVERSE FLOW OR BI-DIRECTIONAL FLOW DIRECTION.  
DESIRED FLOW DIRECTION SHOULD BE SET IN TRANSMITTER CONFIGURATION.
- 4. HOUSING ALLOWS FOR 360° ROTATION FOR ORIENTATION OF WIRING ENTRANCE.
- 5. DIMENSIONS ARE IN INCHES [MM]. METRIC UNITS ARE FOR REFERENCE;  
DO NOT CONVERT.

PROCESS CONNECTION	DIM "X"	DIM "Y"	SENSOR WEIGHT	SHIPPING WEIGHT
ANSI 150# 1"	25 1/2 [648]	4 1/4 [108]	58 LBS [27 kg]	68 LBS [31 kg]
ANSI 300# 1"	26 1/4 [667]	4 7/8 [124]	61 LBS [28 kg]	71 LBS [32 kg]
ANSI 600# 1"	26 3/8 [670]	4 7/8 [124]	61 LBS [28 kg]	71 LBS [32 kg]
ANSI 150# 1 1/2"	25 3/4 [655]	5 [127]	62 LBS [28 kg]	71 LBS [32 kg]
ANSI 300# 1 1/2"	26 3/8 [670]	6 1/8 [155]	67 LBS [31 kg]	77 LBS [35 kg]
ANSI 600# 1 1/2"	26 1/2 [673]	6 1/8 [155]	69 LBS [31 kg]	78 LBS [36 kg]



		MICRO MOTION, INC. BOULDER, COLORADO	
		DIM DWG, T100 ANSI CORE AL	
THIRD ANGLE PROJECTION	NAME	DATE	REV.
DRAWN	SES	10/22/02	SIZE DWG. NO.
CHKD.	JLA	12/16/02	D EP-20000444 A
APVD.	JLA	12/16/02	SCALE 1:2 DO NOT SCALE DRAWING SHEET 1 OF 1

COPYRIGHT 2001 MICRO MOTION, INC.  
ALL RIGHTS RESERVED

8 7 6 5 4 3 2 1

GENERAL NOTES (UNLESS OTHERWISE SPECIFIED)

1 ASME/ANSI B16.5 FLANGE: CLASS 150, 300 OR 600.  
 FLANGE CONSTRUCTED FROM TWO MATERIALS:  
 - F316/316L STAINLESS STEEL AND TITANIUM GRADE 5 (6AL-4V).  
 - ONLY TITANIUM GRADE 5 IS IN CONTACT WITH PROCESS FLOW.  
 - USE PROPERTIES OF F316 FOR MECHANICAL PROPERTIES.

2. MATERIAL OF SENSOR CONSTRUCTION:  
 WETTED MATERIALS: TITANIUM  
 SENSOR CASE MATERIAL: STAINLESS STEEL 304L/CF3  
 WIRING JUNCTION BOX: ALUMINUM PAINTED

3 THE ARROW ON THE SENSOR HOUSING INDICATES NORMAL FLOW DIRECTION.  
 THE SENSOR CAN BE INSTALLED IN NORMAL (FORWARD) FLOW,  
 REVERSE FLOW OR BI-DIRECTIONAL FLOW DIRECTION.  
 DESIRED FLOW DIRECTION SHOULD BE SET IN TRANSMITTER CONFIGURATION.

4 HOUSING ALLOWS FOR 360° ROTATION FOR ORIENTATION OF WIRING ENTRANCE.

5. DIMENSIONS ARE IN INCHES [MM]. METRIC UNITS ARE FOR REFERENCE;  
 DO NOT CONVERT.

1

PROCESS CONNECTION	DIM "X"	DIM "Y"	SENSOR WEIGHT	SHIPPING WEIGHT
ANSI 150# 1/2"	20 13/16 [529]	3 1/2 [89]	33 LBS [15 kg]	41 LBS [19 kg]
ANSI 300# 1/2"	21 3/8 [542]	3 3/4 [95]	34 LBS [16 kg]	42 LBS [20 kg]
ANSI 600# 1/2"	21 7/16 [545]	3 3/4 [95]	34 LBS [16 kg]	42 LBS [20 kg]
ANSI 150# 1"	20 13/16 [529]	4 1/4 [108]	35 LBS [16 kg]	44 LBS [20 kg]
ANSI 300# 1"	21 9/16 [548]	4 7/8 [124]	38 LBS [18 kg]	46 LBS [21 kg]
ANSI 600# 1"	21 9/16 [548]	4 7/8 [124]	38 LBS [18 kg]	46 LBS [21 kg]

		MICRO MOTION, INC. BOULDER, COLORADO			
		DIM DWG, T075 ANSI CORE AL			
THIRD ANGLE PROJECTION	NAME SES	DATE 10/23/02	SIZE D	DWG. NO. EP-20000438	REV. A
DRAWN	CHKD. JLA	DATE 12/16/02	SCALE 3:5	DO NOT SCALE DRAWING	SHEET 1 OF 1

COPYRIGHT 2001 MICRO MOTION, INC.  
 ALL RIGHTS RESERVED

8 7 6 5 4 3 2 1

8

7

6

5

4

3

2

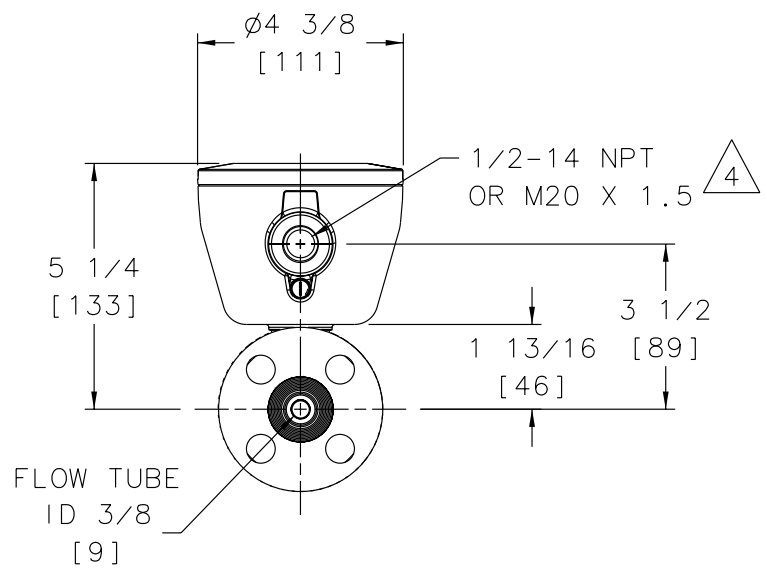
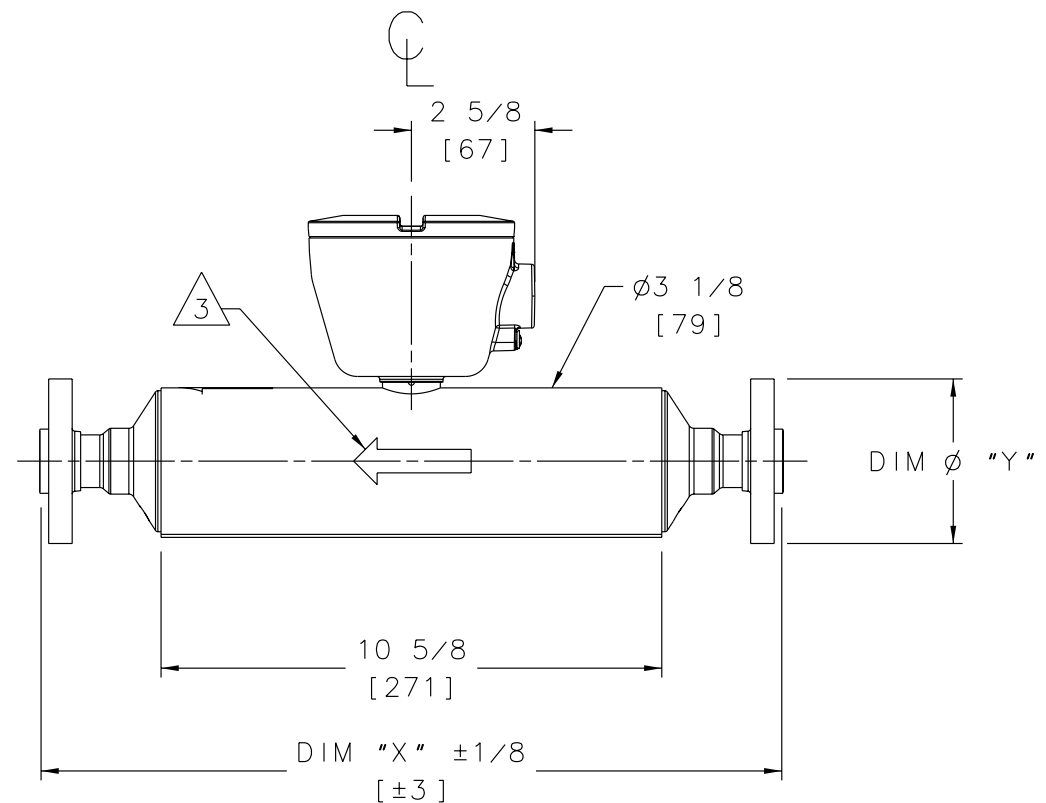
1

GENERAL NOTES (UNLESS OTHERWISE SPECIFIED)

- 1. ASME/ANSI B16.5 FLANGE: CLASS 150, 300 OR 600.  
FLANGE CONSTRUCTED FROM TWO MATERIALS:
  - F316/316L STAINLESS STEEL AND TITANIUM GRADE 5 (6AL-4V).
  - ONLY TITANIUM GRADE 5 IS IN CONTACT WITH PROCESS FLOW.
  - USE PROPERTIES OF F316 FOR MECHANICAL PROPERTIES.
- 2. MATERIAL OF SENSOR CONSTRUCTION:  
WETTED MATERIALS: TITANIUM  
SENSOR CASE MATERIAL: STAINLESS STEEL 304L  
WIRING JUNCTION BOX: ALUMINUM PAINTED
- 3. THE ARROW ON THE SENSOR HOUSING INDICATES NORMAL FLOW DIRECTION. THE SENSOR CAN BE INSTALLED IN NORMAL (FORWARD) FLOW, REVERSE FLOW OR BI-DIRECTIONAL FLOW DIRECTION. DESIRED FLOW DIRECTION SHOULD BE SET IN TRANSMITTER CONFIGURATION.
- 4. HOUSING ALLOWS FOR 360° ROTATION FOR ORIENTATION OF WIRING ENTRANCE.
- 5. DIMENSIONS ARE IN INCHES [MM]. METRIC UNITS ARE FOR REFERENCE; DO NOT CONVERT.

1

PROCESS CONNECTION	DIM "X"	DIM "Y"	SENSOR WEIGHT	SHIPPING WEIGHT
ANSI 150# 1/2"	15 3/4 [400]	3 1/2 [89]	16 LBS [7 kg]	21 LBS [10 kg]
ANSI 300# 1/2"	16 1/4 [413]	3 3/4 [95]	17 LBS [8 kg]	22 LBS [10 kg]
ANSI 600# 1/2"	16 3/8 [417]	3 3/4 [95]	17 LBS [8 kg]	22 LBS [10 kg]



				<b>MICRO MOTION, INC.</b> BOULDER, COLORADO	
		DIM DWG, T050 ANSI CORE AL			
NAME	DATE	SIZE	DWG. NO.	REV.	
DRAWN SES	10/22/02	D	EP-20000431	A	
CHKD. JLA	12/16/02	SCALE 1:2	DO NOT SCALE DRAWING	SHEET 1 OF 1	

COPYRIGHT 2001 MICRO MOTION, INC. ALL RIGHTS RESERVED

8

7

6

5

4

3

2

1

8

7

6

5

4

3

2

1

GENERAL NOTES (UNLESS OTHERWISE SPECIFIED)

1 JIS FLANGE PER JIS B2238.  
 FLANGE CONSTRUCTED FROM TWO MATERIALS:  
 - F316/316L STAINLESS STEEL AND TITANIUM GRADE 5 (6AL-4V).  
 - ONLY TITANIUM GRADE 5 IS IN CONTACT WITH PROCESS FLOW.  
 - USE PROPERTIES OF F316 FOR MECHANICAL PROPERTIES.

2. MATERIAL OF SENSOR CONSTRUCTION:  
 WETTED MATERIALS: TITANIUM  
 SENSOR CASE MATERIAL: STAINLESS STEEL 304L  
 WIRING JUNCTION BOX: STAINLESS STEEL CF-3M

3 THE ARROW INDICATES NORMAL FLOW DIRECTION.  
 THE SENSOR CAN BE INSTALLED IN NORMAL (FORWARD) FLOW,  
 REVERSE FLOW OR BI-DIRECTIONAL FLOW DIRECTION.  
 DESIRED FLOW DIRECTION SHOULD BE SET IN TRANSMITTER CONFIGURATION.

4. DIMENSIONS ARE IN INCHES [MM]. METRIC UNITS ARE FOR REFERENCE; DO NOT CONVERT.

5 HOUSING ALLOWS FOR 360° ROTATION FOR ORIENTATION OF WIRING ENTRANCE.

1	PROCESS CONNECTION	DIM "X"	DIM "Y"	SENSOR WEIGHT	SHIPPING WEIGHT
	JIS 10/20K 15MM	13 5/8 [346]	3 3/4 [95]	19 LBS [9 kg]	24 LBS [11 kg]

D

D

C

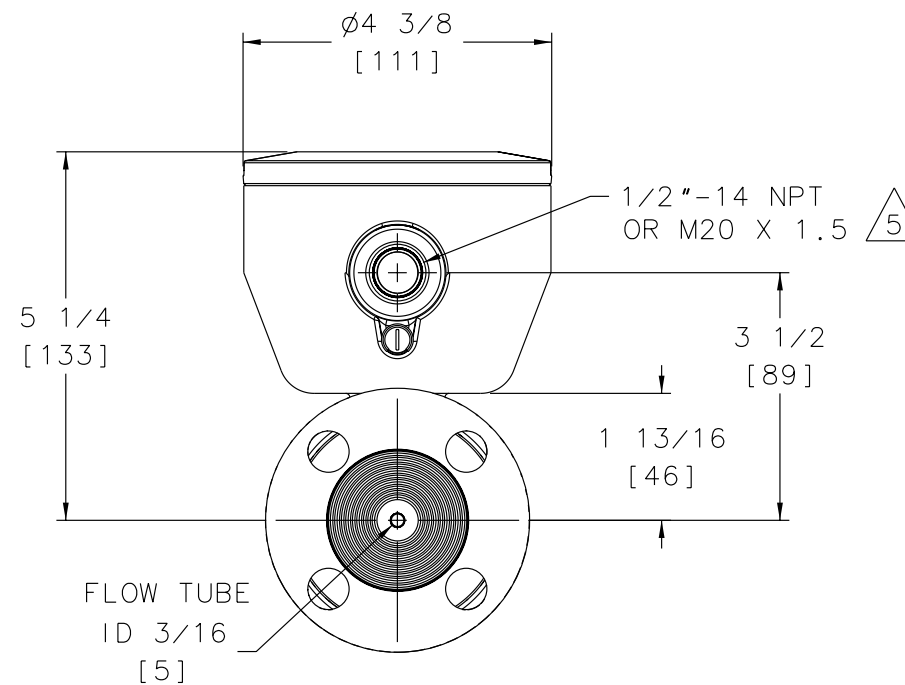
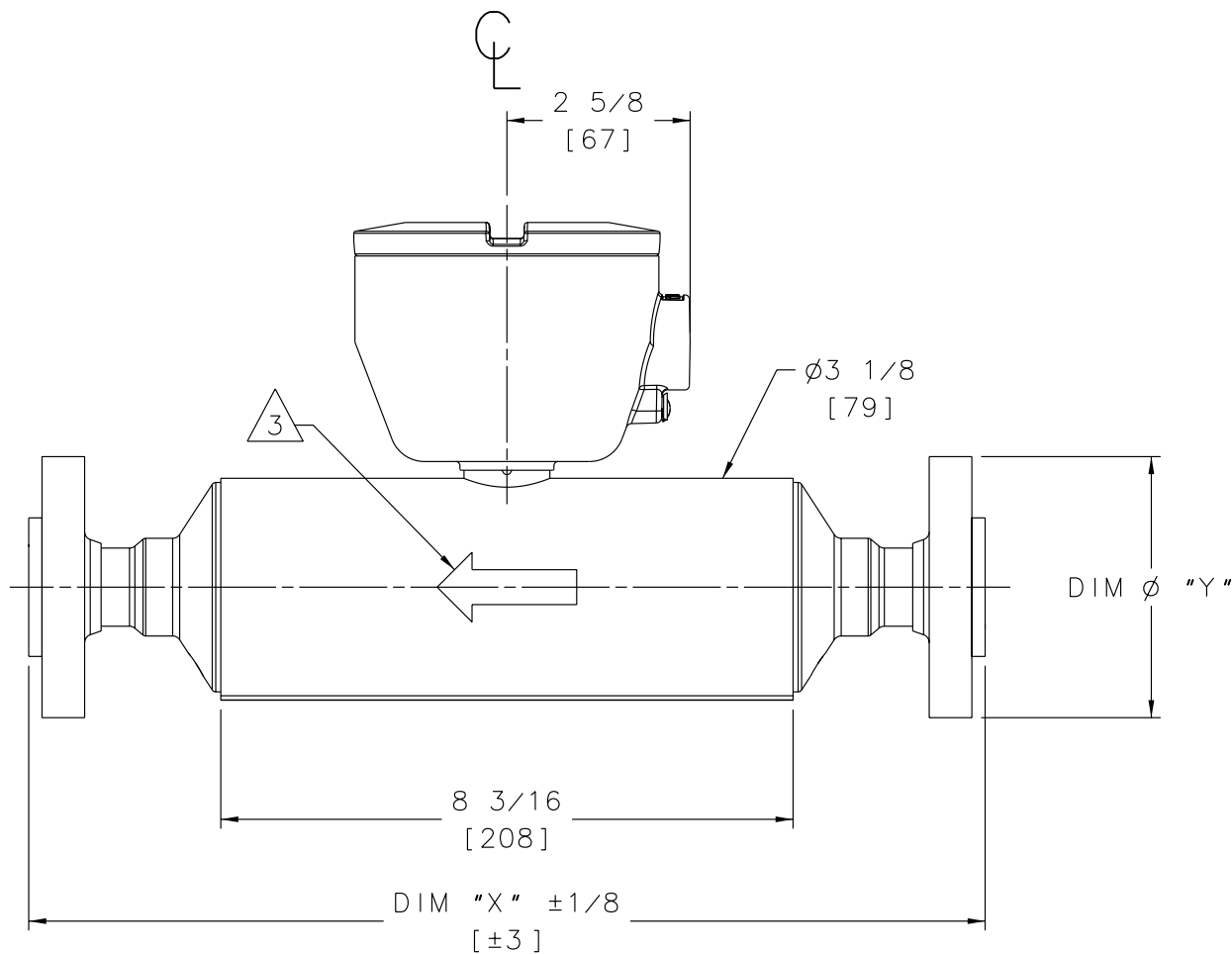
C

B

B

A

A



		MICRO MOTION, INC. BOULDER, COLORADO			
		DIM DWG, T025 JIS COREPRCSR			
THIRD ANGLE PROJECTION	NAME	DATE	SIZE	DWG. NO.	REV.
	DRAWN LLR	6/26/01	D	EP-4000671	B
	CHKD. JLA	2/14/02	SCALE 3:4	DO NOT SCALE DRAWING	SHEET 1 OF 1
	APVD. JLA	2/14/02			

COPYRIGHT 2003 MICRO MOTION, INC.  
 ALL RIGHTS RESERVED

8

7

6

5

4

3

2

1

8

7

6

5

4

3

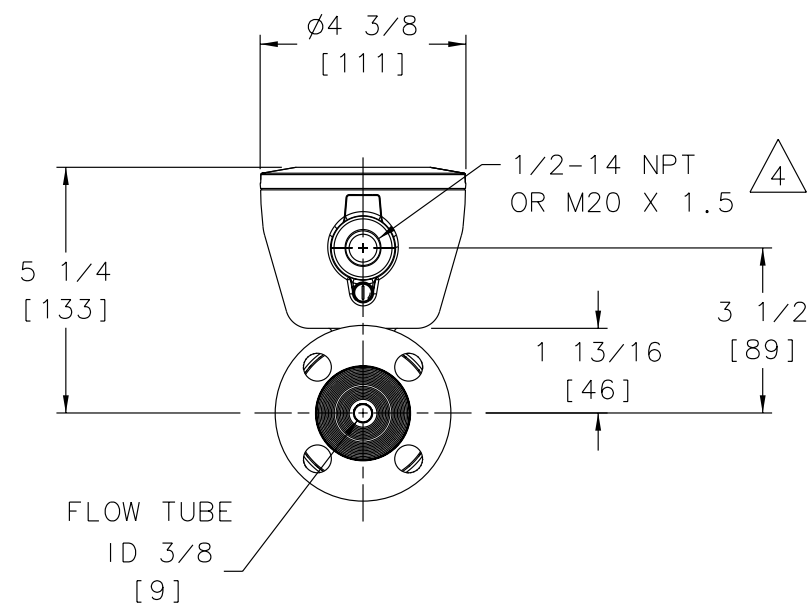
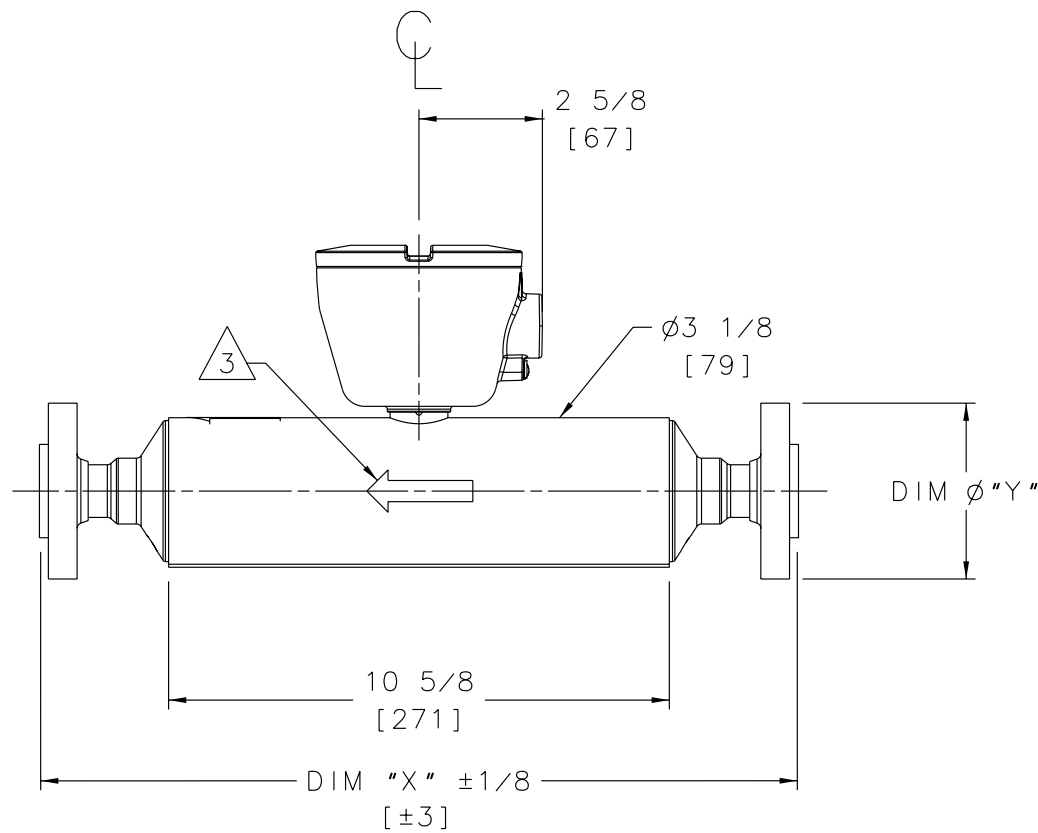
2

1

GENERAL NOTES (UNLESS OTHERWISE SPECIFIED)

- 1. JIS FLANGE PER JIS B2238.  
FLANGE CONSTRUCTED FROM TWO MATERIALS:
  - F316/316L STAINLESS STEEL AND TITANIUM GRADE 5 (6AL-4V).
  - ONLY TITANIUM GRADE 5 IS IN CONTACT WITH PROCESS FLOW.
  - USE PROPERTIES OF F316 FOR MECHANICAL PROPERTIES.
- 2. MATERIAL OF SENSOR CONSTRUCTION:  
WETTED MATERIALS: TITANIUM  
SENSOR CASE MATERIAL: STAINLESS STEEL 304L  
WIRING JUNCTION BOX: ALUMINUM PAINTED
- 3. THE ARROW ON THE SENSOR HOUSING INDICATES NORMAL FLOW DIRECTION.  
THE SENSOR CAN BE INSTALLED IN NORMAL (FORWARD) FLOW,  
REVERSE FLOW OR BI-DIRECTIONAL FLOW DIRECTION.  
DESIRED FLOW DIRECTION SHOULD BE SET IN TRANSMITTER CONFIGURATION.
- 4. HOUSING ALLOWS FOR 360° ROTATION FOR ORIENTATION OF WIRING ENTRANCE.
- 5. DIMENSIONS ARE IN INCHES. METRIC UNITS ARE FOR REFERENCE; DO NOT CONVERT.

PROCESS CONNECTION	DIM "X"	DIM "Y"	SENSOR WEIGHT	SHIPPING WEIGHT
JIS 10/20K 15MM	16 1/16 [409]	3 3/4 [95]	17 LBS [8 kg]	22 LBS [10 kg]



				MICRO MOTION, INC. BOULDER, COLORADO	
		DIM DWG, T050 JIS CORE AL			
NAME	DATE	SIZE	DWG. NO.	REV.	
DRAWN SES	10/28/02	D	EP-20000434	A	
CHKD. JLA	12/16/02	SCALE 1:2	DO NOT SCALE DRAWING	SHEET 1 OF 1	
APVD. JLA	12/16/02				

COPYRIGHT 2001 MICRO MOTION, INC. ALL RIGHTS RESERVED

8

7

6

5

4

3

2

1

8

7

6

5

4

3

2

1

GENERAL NOTES (UNLESS OTHERWISE SPECIFIED)

- 1. JIS FLANGE PER JIS B2238.  
FLANGE CONSTRUCTED FROM TWO MATERIALS:
  - F316/316L STAINLESS STEEL AND TITANIUM GRADE 5 (6AL-4V).
  - ONLY TITANIUM GRADE 5 IS IN CONTACT WITH PROCESS FLOW.
  - USE PROPERTIES OF F316 FOR MECHANICAL PROPERTIES.
- 2. MATERIAL OF SENSOR CONSTRUCTION:  
WETTED MATERIALS: TITANIUM  
SENSOR CASE MATERIAL: STAINLESS STEEL 304L  
WIRING JUNCTION BOX: ALUMINUM PAINTED
- 3. THE ARROW INDICATES NORMAL FLOW DIRECTION.  
THE SENSOR CAN BE INSTALLED IN NORMAL (FORWARD) FLOW,  
REVERSE FLOW OR BI-DIRECTIONAL FLOW DIRECTION.  
DESIRED FLOW DIRECTION SHOULD BE SET IN TRANSMITTER CONFIGURATION.
- 4. HOUSING ALLOWS FOR 360° ROTATION FOR ORIENTATION OF WIRING ENTRANCE.
- 5. DIMENSIONS ARE IN INCHES [MM]. METRIC UNITS ARE FOR REFERENCE;  
DO NOT CONVERT.



PROCESS CONNECTION	DIM "X"	DIM "Y"	SENSOR WEIGHT	SHIPPING WEIGHT
JIS 10K/20K 15mm	21 5/16 [542]	3 3/4 [95]	34 LBS [16 kg]	42 LBS [19 kg]
JIS 10K/20K 25mm	21 7/16 [545]	4 15/16 [125]	37 LBS [17 kg]	45 LBS [21 kg]

D

D

C

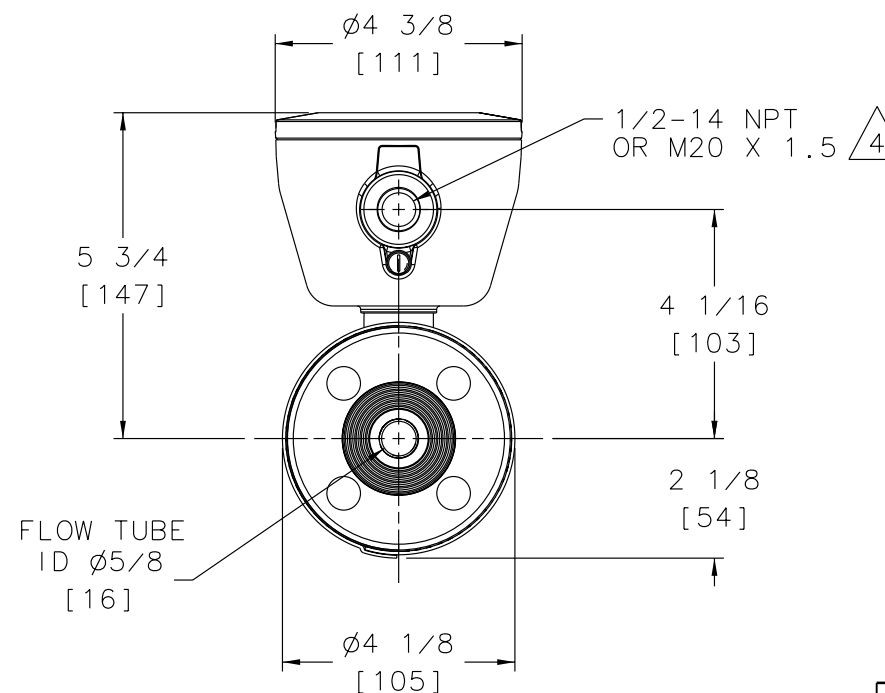
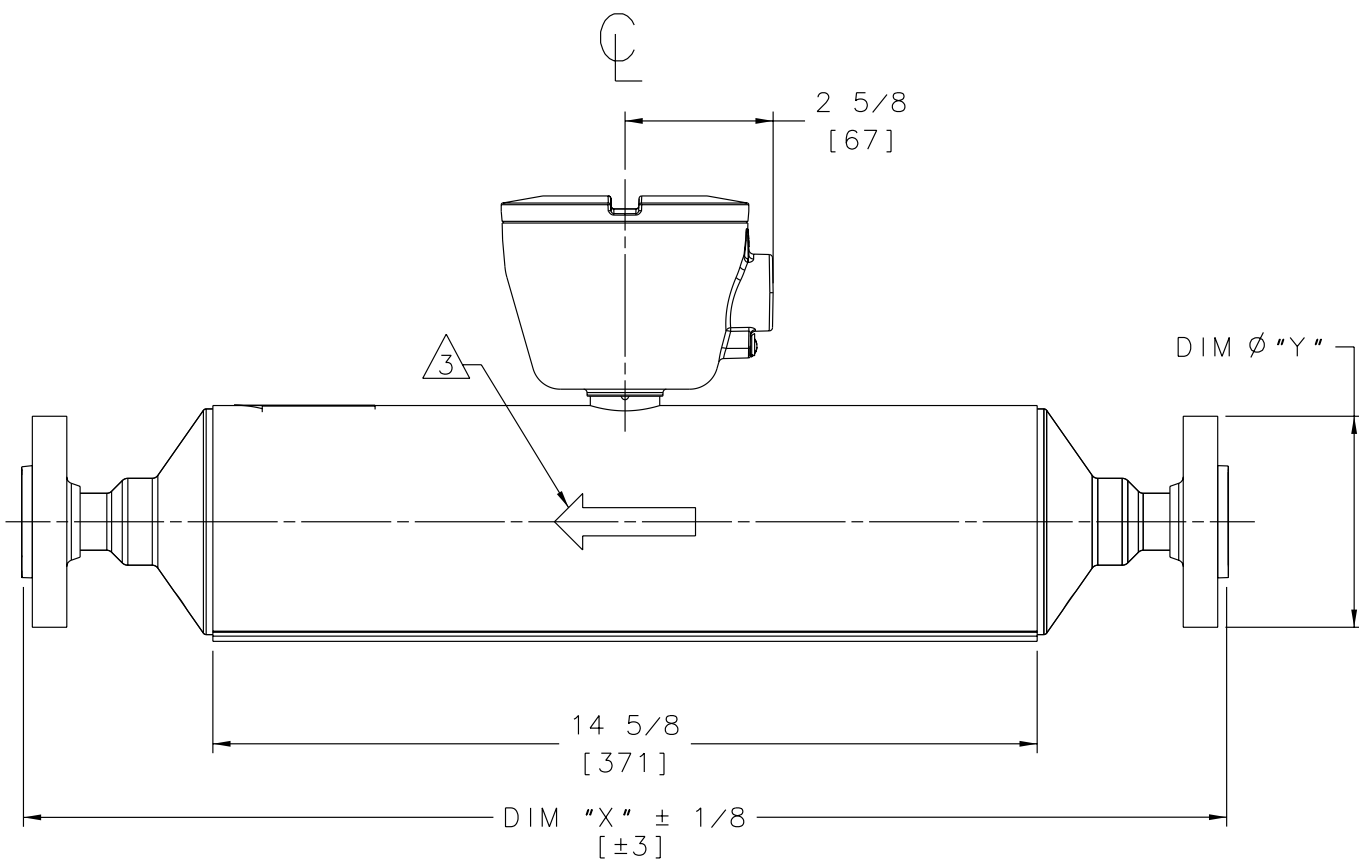
C

B

B

A

A



		MICRO MOTION, INC. BOULDER, COLORADO	
THIRD ANGLE PROJECTION		DIM DWG, T075 JIS CORE AL	
NAME	DATE	SIZE	DWG. NO.
DRAWN SES	11/25/02	D	EP-20000441
CHKD. JLA	12/16/02	SCALE 3:5	DO NOT SCALE DRAWING
APVD. JLA	12/16/02	SHEET 1	OF 1

COPYRIGHT 2001 MICRO MOTION, INC. ALL RIGHTS RESERVED

8

7

6

5

4

3

2

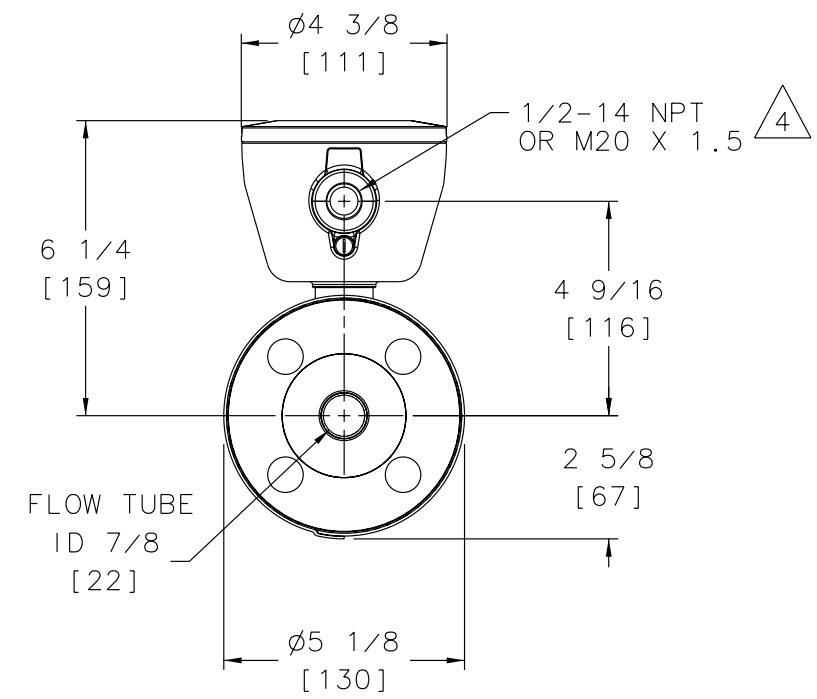
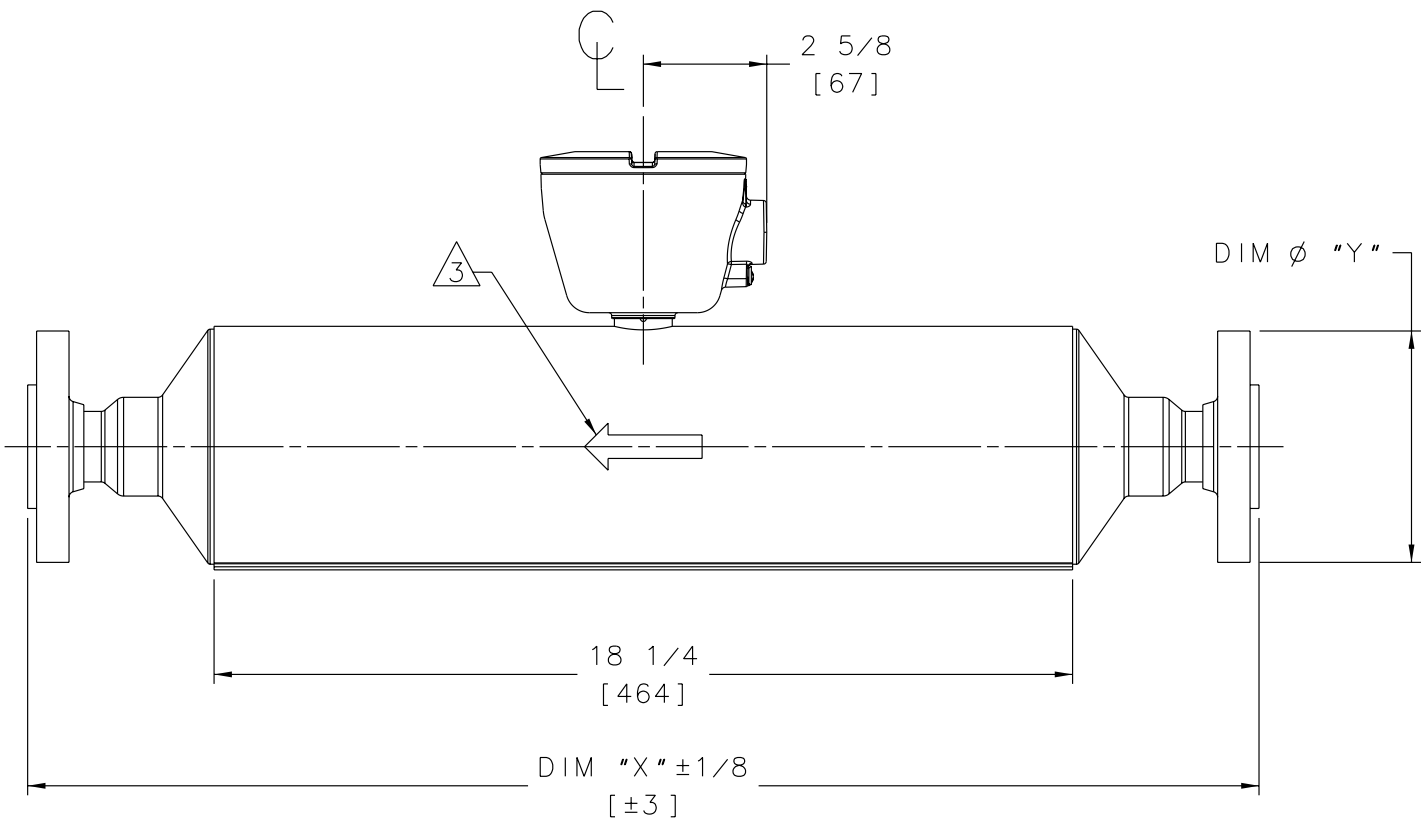
1



GENERAL NOTES (UNLESS OTHERWISE SPECIFIED)

1. JIS FLANGE PER JIS B2238.  
FLANGE CONSTRUCTED FROM TWO MATERIALS:
  - F316/316L STAINLESS STEEL AND TITANIUM GRADE 5 (6AL-4V).
  - ONLY TITANIUM GRADE 5 IS IN CONTACT WITH PROCESS FLOW.
  - USE PROPERTIES OF F316 FOR MECHANICAL PROPERTIES.
2. MATERIAL OF SENSOR CONSTRUCTION:  
WETTED MATERIALS: TITANIUM  
SENSOR CASE MATERIAL: STAINLESS STEEL 304L  
WIRING JUNCTION BOX: ALUMINUM PAINTED
3. THE ARROW INDICATES NORMAL FLOW DIRECTION.  
THE SENSOR CAN BE INSTALLED IN NORMAL (FORWARD) FLOW,  
REVERSE FLOW OR BI-DIRECTIONAL FLOW DIRECTION.  
DESIRED FLOW DIRECTION SHOULD BE SET IN TRANSMITTER CONFIGURATION.
4. HOUSING ALLOWS FOR 360° ROTATION FOR ORIENTATION OF WIRING ENTRANCE.
5. DIMENSIONS ARE IN INCHES [MM]. METRIC UNITS ARE FOR REFERENCE;  
DO NOT CONVERT.

PROCESS CONNECTION	DIM "X"	DIM "Y"	SENSOR WEIGHT	SHIPPING WEIGHT
JIS 10K/20K 25mm	26 1/8 [664]	4 15/16 [125]	61 LBS [28 kg]	70 LBS [32 kg]
JIS 10K/20K 40mm	26 3/16 [665]	5 1/2 [140]	63 LBS [29 kg]	73 LBS [33 kg]



THIRD ANGLE PROJECTION		MICRO MOTION, INC. BOULDER, COLORADO	
		DIM DWG, T100 JIS CORE AL	
NAME	DATE	SIZE	DWG. NO.
DRAWN SES	11/26/02	D	EP-20000447
CHKD. JLA	12/16/02	SCALE 1:2	DO NOT SCALE DRAWING
APVD. JLA	12/16/02	SHEET 1	OF 1

COPYRIGHT 2001 MICRO MOTION, INC.  
ALL RIGHTS RESERVED

8

7

6

5

4

3

2

1

GENERAL NOTES (UNLESS OTHERWISE SPECIFIED)

- 1. JIS FLANGE PER JIS B2238.  
FLANGE CONSTRUCTED FROM TWO MATERIALS:
  - F316/316L STAINLESS STEEL AND TITANIUM GRADE 5 (6AL-4V).
  - ONLY TITANIUM GRADE 5 IS IN CONTACT WITH PROCESS FLOW.
  - USE PROPERTIES OF F316 FOR MECHANICAL PROPERTIES.
- 2. MATERIAL OF SENSOR CONSTRUCTION:  
WETTED MATERIALS: TITANIUM  
SENSOR CASE MATERIAL: STAINLESS STEEL 304L  
WIRING JUNCTION BOX: ALUMINUM PAINTED
- 3. THE ARROW INDICATES NORMAL FLOW DIRECTION.  
THE SENSOR CAN BE INSTALLED IN NORMAL (FORWARD) FLOW,  
REVERSE FLOW OR BI-DIRECTIONAL FLOW DIRECTION.  
DESIRED FLOW DIRECTION SHOULD BE SET IN TRANSMITTER CONFIGURATION.
- 4. HOUSING ALLOWS FOR 360° ROTATION FOR ORIENTATION OF WIRING ENTRANCE.
- 5. DIMENSIONS ARE IN INCHES [MM]. METRIC UNITS ARE FOR REFERENCE;  
DO NOT CONVERT.



PROCESS CONNECTION	DIM "X"	DIM "Y"	SENSOR WEIGHT	SHIPPING WEIGHT
JIS 10K/20K 40mm	31 7/8 [810]	5 1/2 [140]	140 LBS [64 kg]	154 LBS [70 kg]
JIS 10K/20K 50mm	31 7/8 [810]	6 1/8 [155]	156 LBS [71 kg]	170 LBS [78 kg]

D

D

C

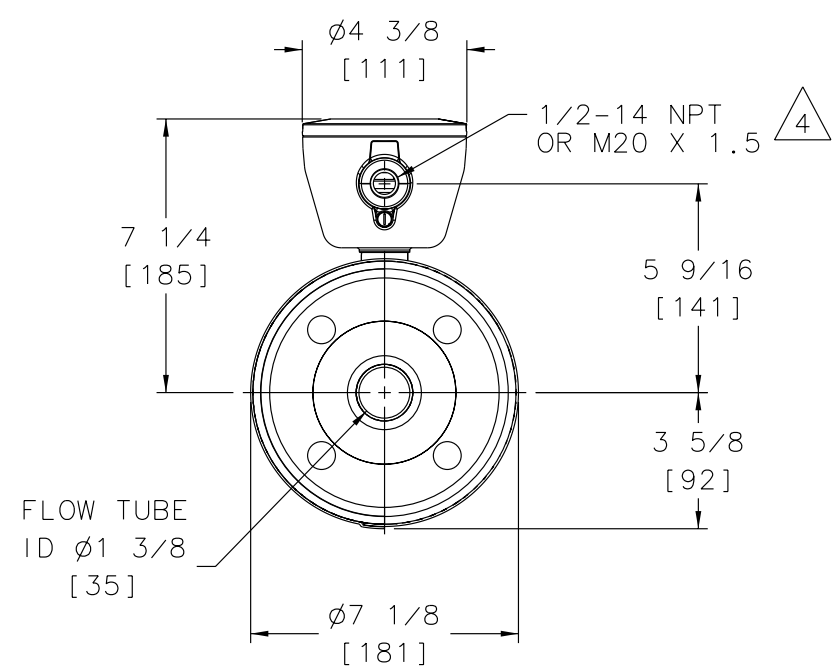
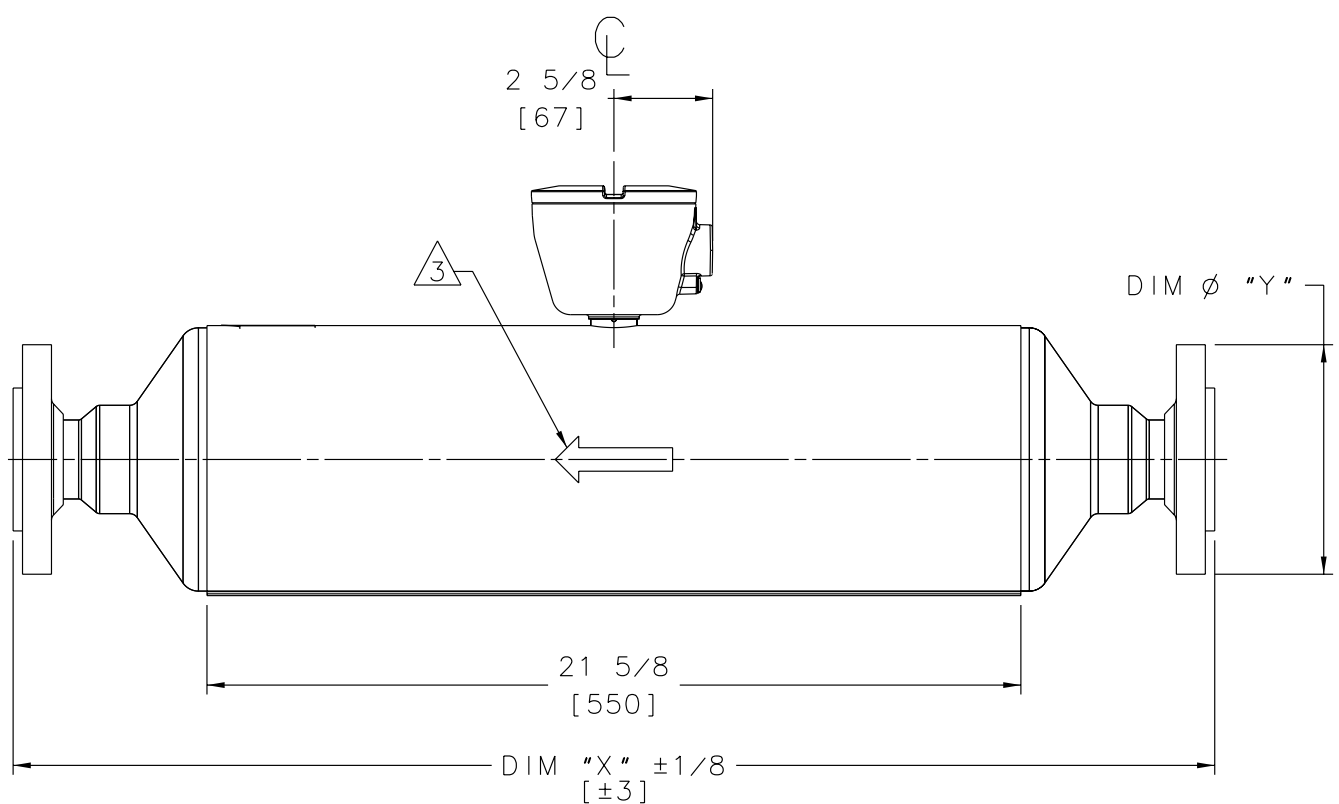
C

B

B

A

A



		MICRO MOTION, INC. BOULDER, COLORADO	
THIRD ANGLE PROJECTION		DIM DWG, T150 JIS CORE AL	
NAME	DATE	SIZE	DWG. NO.
SE	11/25/02	D	EP-20000453
CHKD.	JLA 12/16/02	SCALE	2:5
APVD.	JLA 12/16/02	DO NOT SCALE DRAWING	SHEET 1 OF 1

COPYRIGHT 2002 MICRO MOTION, INC. ALL RIGHTS RESERVED

8

7

6

5

4

3

2

1